









**Drew Hauser**

Hons. Vis. Arts, B.Arch., OAA, FRAIC, AIA, CAHP  
Director of Business Development and Design

# agenda

- Introduction
- Pre-design
- Sustainability
- Case studies
- Discussion



# design

## Past

- Purpose built
- Culture
- Activity behind doors
- Design by hierarchy
- Floorplate design

## Present

- Maximum flexibility
- Collaborative culture
- Activity on display
- Shared and accessible
- Acoustic control
- Net zero design driver



# sustainability

The image features a grayscale aerial photograph of a dense forest. Overlaid on the bottom half of the image is a light gray geometric pattern of interconnected polygons. Three large, bright green circles are arranged horizontally across the middle of the image, each containing a white text label. A horizontal green bar is positioned at the top left, partially underlining the word 'sustainability'.

environment

social

economic

# design drivers

## resiliency & energy

Contracts &  
budgets

Accessibility

Net Zero

Future  
proofing

Research, AI,  
technology

Secure data  
storage

# how

## Canada will lead this at local levels and grassroots levels first

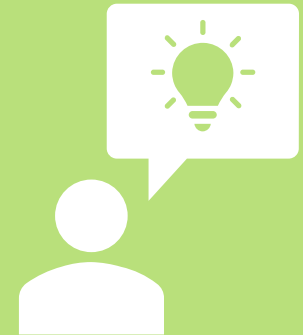
- Understanding a building Master Plan
- How a building is used today and, in the future
- Cost to maintain and operate those buildings directly relates to design investment



Integrated team



Trust



Enlightened client



# how

**Programme + budget =**  
an understanding of time, effort, commitment



design  
matters

# catalyst for change



# Waterloo North Hydro



# The Joyce Centre



- Largest institutional, Net Zero building in Canada
- 96,000-square-foot, solar-powered, state-of-the-art research, learning and lab facility
- Modular, future-proofed furniture and spaces that adapt to change

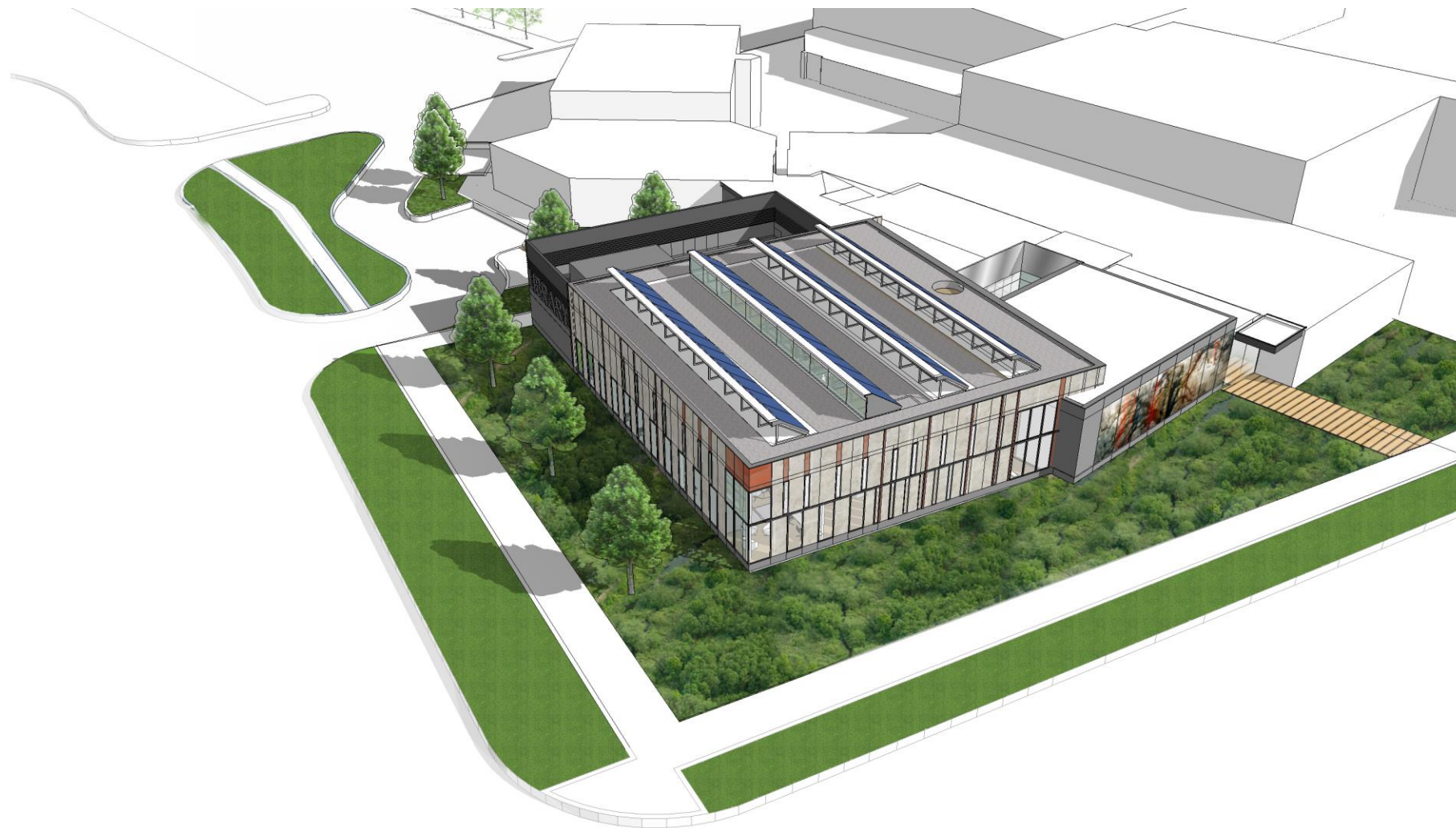


# Endress+Hauser

- Institutional projects inspire/catalyst for private industry
- Net Zero Energy, Zero Carbon, LEED Gold
- Natural light, control, comfort, accessibility
- Science on display



# Valley Park Library









# Liberian Learning Center









# key takeaways

- Ask questions
- Engage users and commitment
- Collaborate and listen
- Design intelligence
- Understand the role of your team
- Integrated design process
- Sustainable solutions